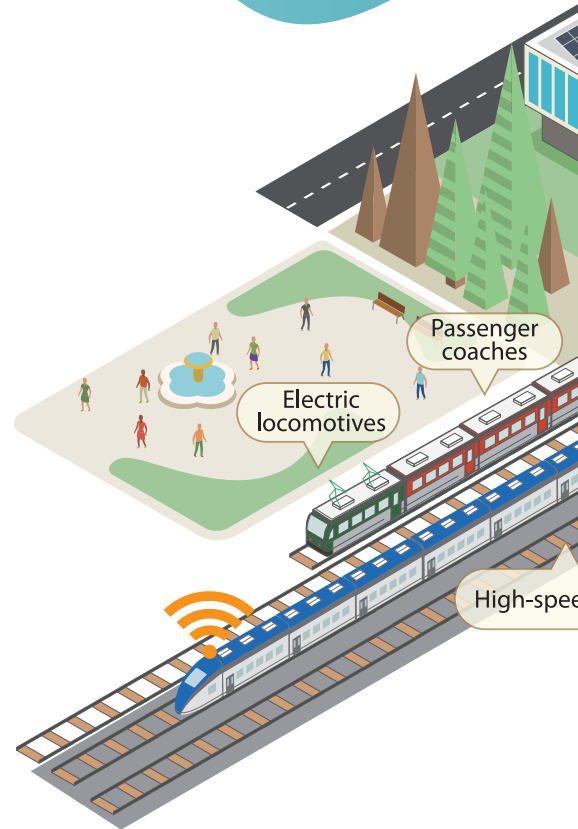
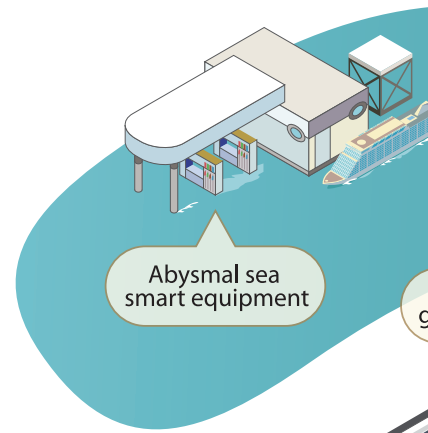


Delivering Solutions for Green, Smart Rail Transit and Urban Operation Service Systems



Main line traffic solutions



● Mainline passenger traffic solutions

- High-speed trains
- EMUs
- DMUs
- Electric locomotives
- Diesel locomotives
- Passenger coaches
- Wireless LAN system for rail passengers

● Mainline freight traffic solutions

- Electric locomotives
- Diesel locomotives
- Freight wagons
- Heavy haul coupled locomotive
- Special freight transportation

● Linehealth management solutions

- Lifting and rescue
- Grid wiring and maintenance
- Line maintenance
- Tunnel clearance
- Bridge inspection

Innovation driven by your needs



- Each product is inspired by you

We seek to integrate your individual needs and ideas into each R&D project. Our vast experience and open innovation system enables us to develop products suited to your particular needs both faster and more efficiently.

- Our R&D capacity is constantly growing

We have 11 national research institutions, 19 national enterprise technical centers, nine overseas R&D centers and 50 R&D institutions at provincial or ministry level. Our R&D work covers a wide array of products and technological applications, ranging from basic technology to system integration technology, underlying software technology, application-level control software technology and product engineering. The scope of our work, from part to module and component, and from system to the whole industrial chain of entire rolling stock vehicles means we are ideal partners in developing and supplying products tailored to your individual needs.

Mass production, quality and fast delivery



- A global leading manufacturing base

CRRC is a world leader in manufacturing and large-scale production, and benefits from the world's largest base for the manufacture of high speed trains, electric and diesel locomotives, passenger coaches, freight wagons, urban rail vehicles and metro cars. As a result, the company has established sound systems for quality assurance, safety guarantee and an expert network of suppliers.

- Delivering high quality products at a fast turnaround

Growing demand in the domestic market has been instrumental in enabling us to develop a strong manufacturing base and perfect parts supply chain. Moreover, our optimised manufacturing system and outstanding team allows us to manufacture products within a shorter production cycle, with better technology and at a lower cost, ensuring that your requirements on quality, price and delivery schedule are met.

Lifelong Partners



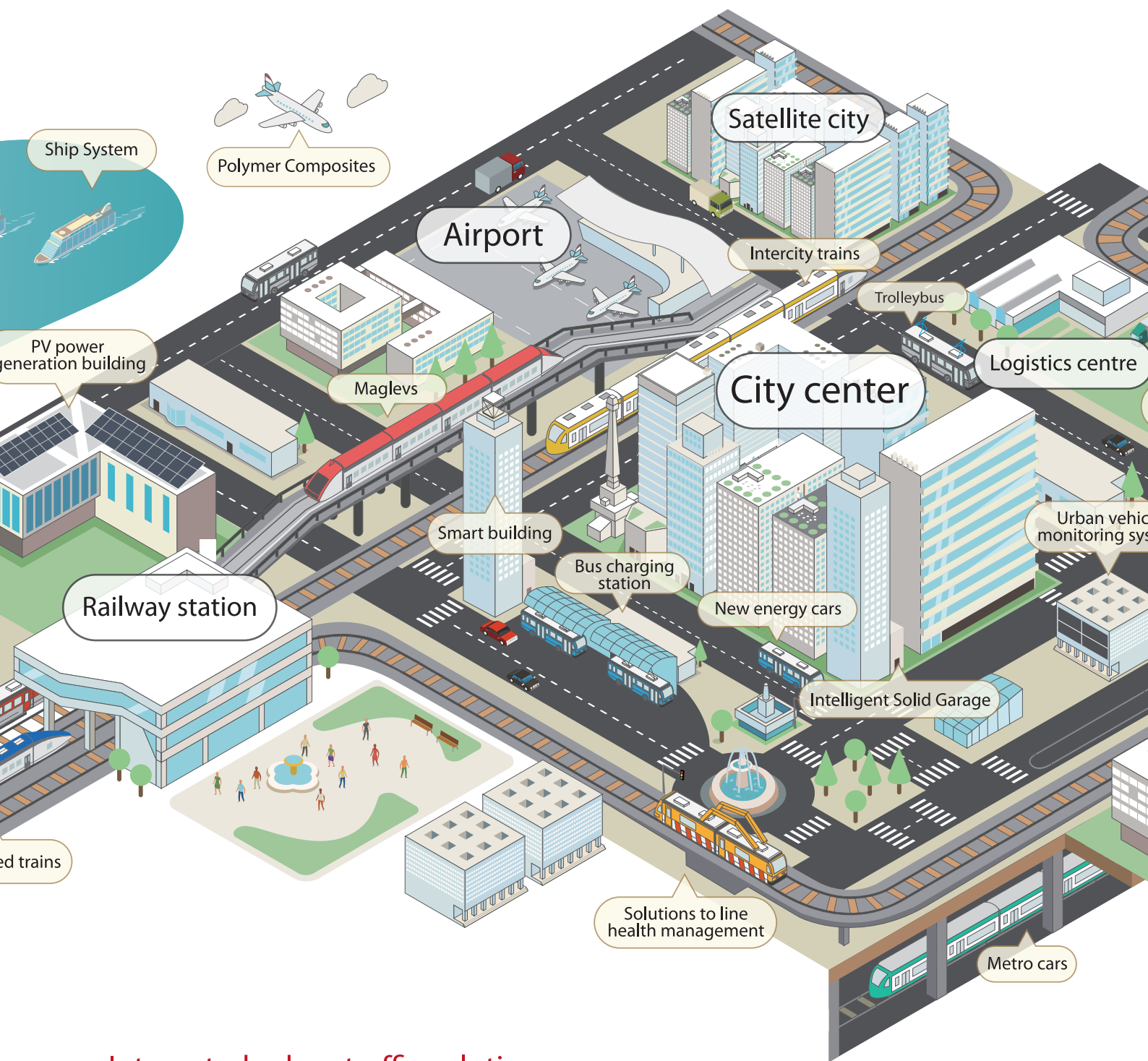
- Wherever you are, our services are at hand

With a service network spanning across the globe, we are at your service 24 hours a day. Our extensive operational experience ensures that waiting times and cost are reduced to a minimum, whatever the circumstances.

- We are more than a product supplier

CRRC is your ideal partner in growth. We are committed to creating jobs locally, accommodating industry needs and improving urban life. In addition, we provide you with a 24-hour service and will deliver a wide range of services over time including maintenance throughout the product's entire life cycle, EPC, financial leasing and technological and industrial upgrading.

We hope to be part of your value chain and grow with your togetherbusiness.



Integrated urban traffic solutions

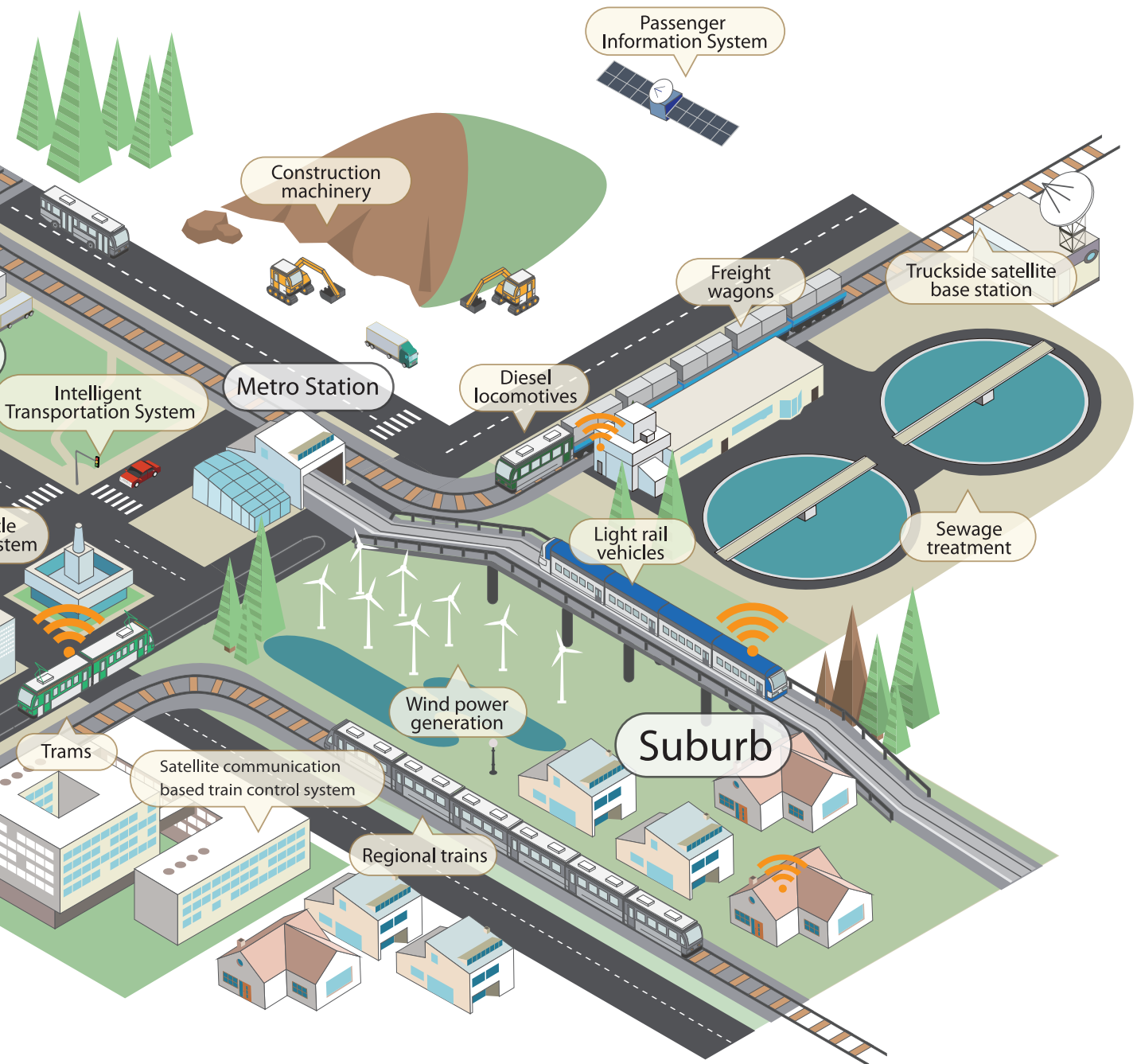


- Intercity and suburban commuting solutions

Intercity and regional trains
 Light rail vehicles
 Maglevs
 Urban vehicle monitoring system

- Urban traffic solutions

Metro cars
 Monorails
 Trams
 New energy cars
 Wireless LAN system for public transport



Operation services for smart/green cities



- Operation service solutions for green cities

- Wind power generation
- PV power generation
- Sewage treatment
- Polymer Trolleybuses material
- Hybrid bus

- Operation service solutions for smart cities

- Smart building
- Smart equipment
- Intelligent Transportation system
- Internet-based purchase and logistics system
- Satellite communication based train control system
- Passenger information system

Global Business

CRRG has 42 overseas subsidiaries, 9 international R&D centers and has exported its products to 101 countries, making it a truly international business.

- 42 overseas subsidiaries
- 101 countries and regions
- 9 overseas R & D centers



Boston metro for Massachusetts, USA



Intercity EMU for Argentina



Electric locomotives in Belarus



Diesel locomotives for Australia



Modern tram in Samsun, Turkey



Tank cars for France



Manufacturing base in South Africa



Kuala Lumpur maintenance center in Malaysia

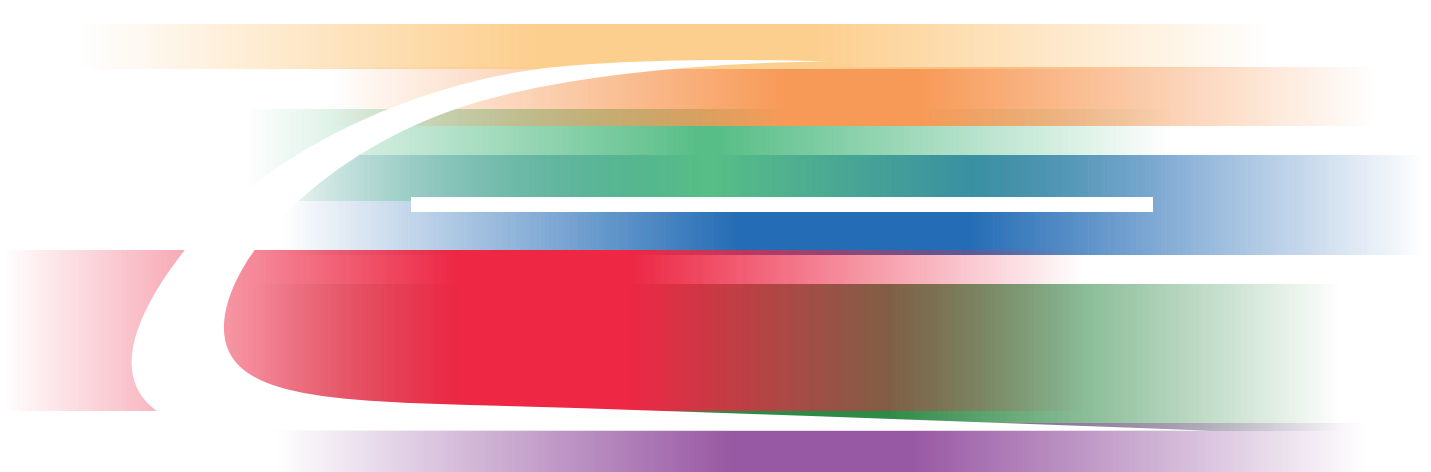


CRRC Corporation Limited

No.16-5 Mid-road, West 4th Ring Road, Haidian District, Beijing, China

English-Tel:+86-10-51897301
Русский-Tel:+86-10-51897300

leagyou@crrcgc.cc
chenxiang@crrcgc.cc



CRRC

Connecting the World through
Better Mobility

www.crrcgc.cc

Connecting the World through Better Mobility

Humans desire to communicate in a more low-carbon, fast, efficient and comfortable manner.

CRRC is the world's largest supplier of rail transit equipment. We have long been committed to providing better comprehensive solutions for human mobility, ranging from rail-based passenger and freight traffic and its health management, to integrated urban rail solutions and operation services.



Our mission is to Connect the World through Better Mobility.

CRRC was founded through the merger of China CNR Corporation Limited and CSR Corporation Limited. On 8 June 2015, the company was listed on the Shanghai Stock Exchange and the Hong Kong Stock Exchange. Headquartered in Beijing, CRRC has 46 wholly owned and majority owned subsidiaries and counts more than 170,000 employees.

CRRC has established a global sales and service network by optimising its resource allocation and by reinforcing the scale advantage that it gained from inheriting complete product lines from CNR Corporation Limited and CSR Corporation Limited. According to SCI Verkehr GmbH, a leading international industry consultancy, CRRC's sales revenue for new rolling stock products has been ranked number one in the world for eight consecutive years since 2008. In 2014, CRRC produced the world's highest number of electric locomotives, high-speed trains, passenger coaches, freight wagons and metro cars among the world's nine major rolling stock portfolio.

CRRC's global client base currently extends to 101 countries and regions. As a company, we are actively engaged in the research and development of global sustainable transport through product trade, capital management, investment in factories, and the sharing and export of technology.

Concentric diversification has been at the heart of our success. CRRC's strong technical abilities and great manufacturing capabilities in the rolling stock industry have facilitated its expansion into a wider scope of green and smart city developments and enabled CRRC to achieve remarkable success in nine new industries: wind power equipment, polymer composites, new energy buses, environmental protection, ship and marine engineering equipment, PV power generation, intelligent machinery, heavy engineering and mining machinery, and information and software technology.

Connecting
the World through
Better Mobility

